

CERTIFICATE OF LOCATION OF GOVERNMENT CORNER

SOUTH WEST Corner of Section 9, Township 107, Range 40, 5TH P. 14

STATE OF MINNESOTA, County of MURRAY

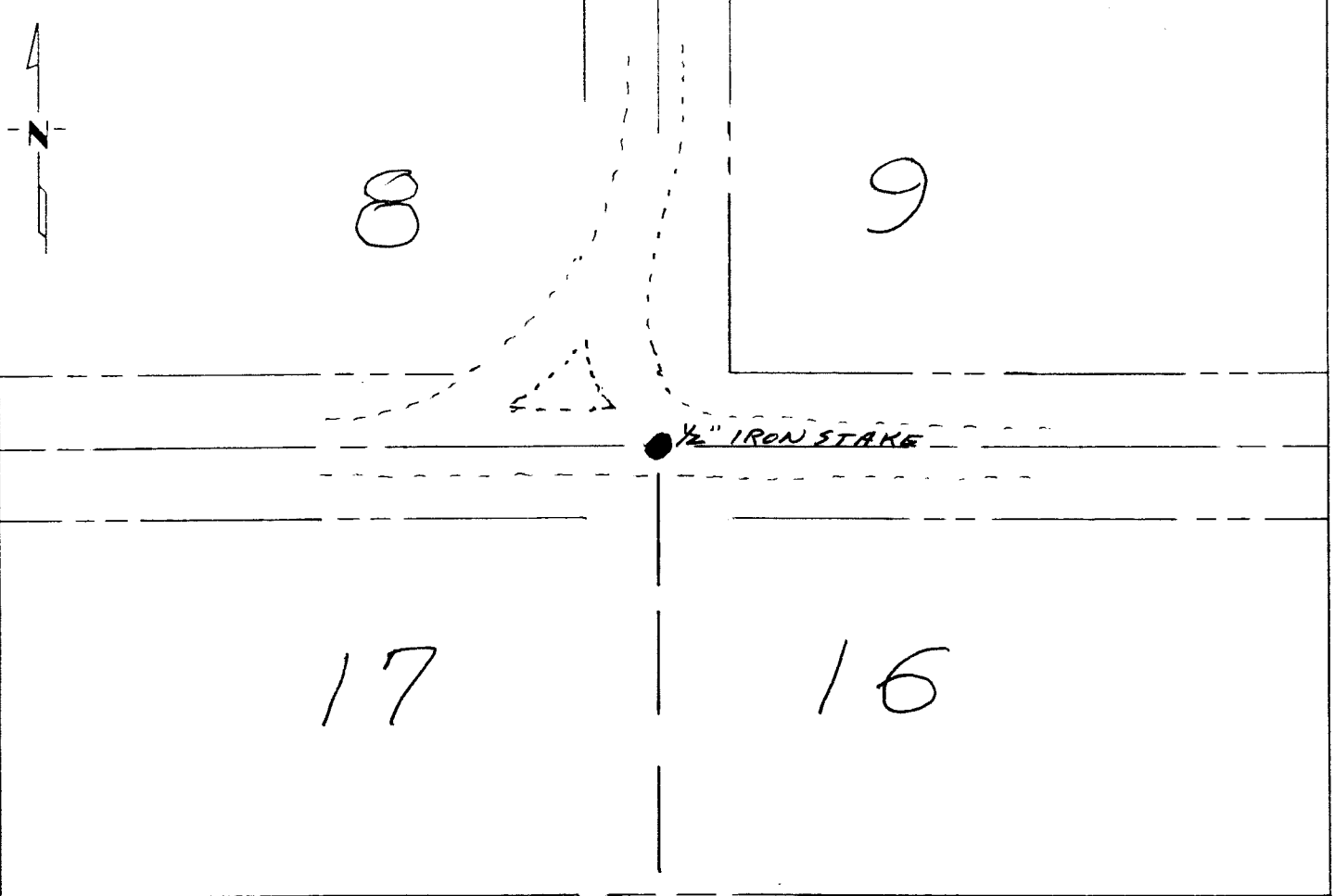
At the corner location shown on the sketch:

On 9-27-88 found a 1/2" IRON STAKE AT INTERSECTION
DATE
OF ROADS 1" BELOW SURFACE

left monument as found, lowered monument, removed monument (explain)

On _____ placed a _____
DATE

SKETCH OF REFERENCE TIES



Statement of evidence relative to this corner location is on back of page.

I hereby certify that this document and the data contained herein was prepared by me or under my direct supervision.

C. Allen Ruggenist 10-21-88
SIGNATURE DATE

Registration No. 6700

Land Surveyor, Professional Engineer

County Surveyor, County Engineer

OFFICE OF THE COUNTY RECORDER

County of _____

I hereby certify that this document was filed in the Co. Recorders office at _____ M. on the _____ day of _____ A.D., 19 _____

County Recorder _____

By _____, Deputy

DOCUMENT NO. _____

SURVEY NO. ML 88015
SIoux ENGINEERING, INCORPORATED
WINDOM, MINNESOTA

Statement of Evidence:

COUNTY ENGINEER RECORDS INDICATE FIELD STONE WITH
IRON PIN OVER IT.